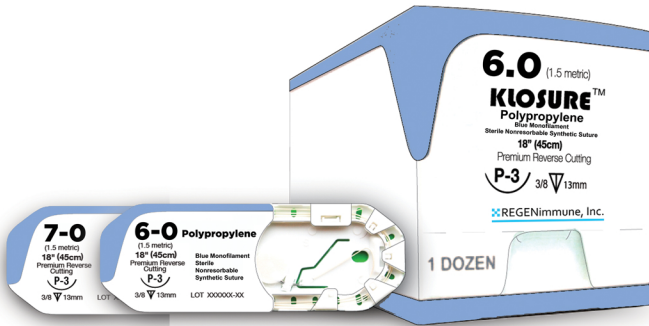


KLOSURE

Polypropylene sutures

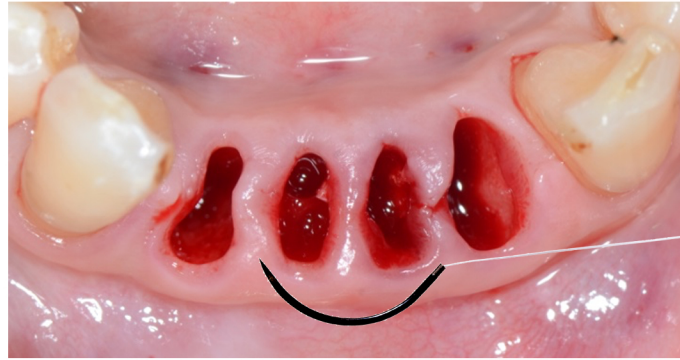


Applications: Delicate tissue manipulations eg. Soft tissue and bone augmentation.

Short (10" 25 cm) thread is optimal for most critical flap procedures because it minimizes trauma from passing thread through tissue, and ensures sharp needle.

KLOSURE

PTFE sutures



Applications: Regenerative procedures, where extra tension is required for flap adaptation, without compromising flap survival.

- ⊕ Versatile suture
- ⊕ Easy to handle
- ⊕ Allows for adjusting flap tension
- ⊕ Monofilament thread: no bacterial wicking
- ⊕ Suited for prolonged retention
- ⊕ Needle penetrates tissues with ease
- ⊕ Needle stays sharp and retains shape